

# Arecont Vision SurroundVideo®

AV8180

AV8360

Panoramic 8 Megapixel IP Video



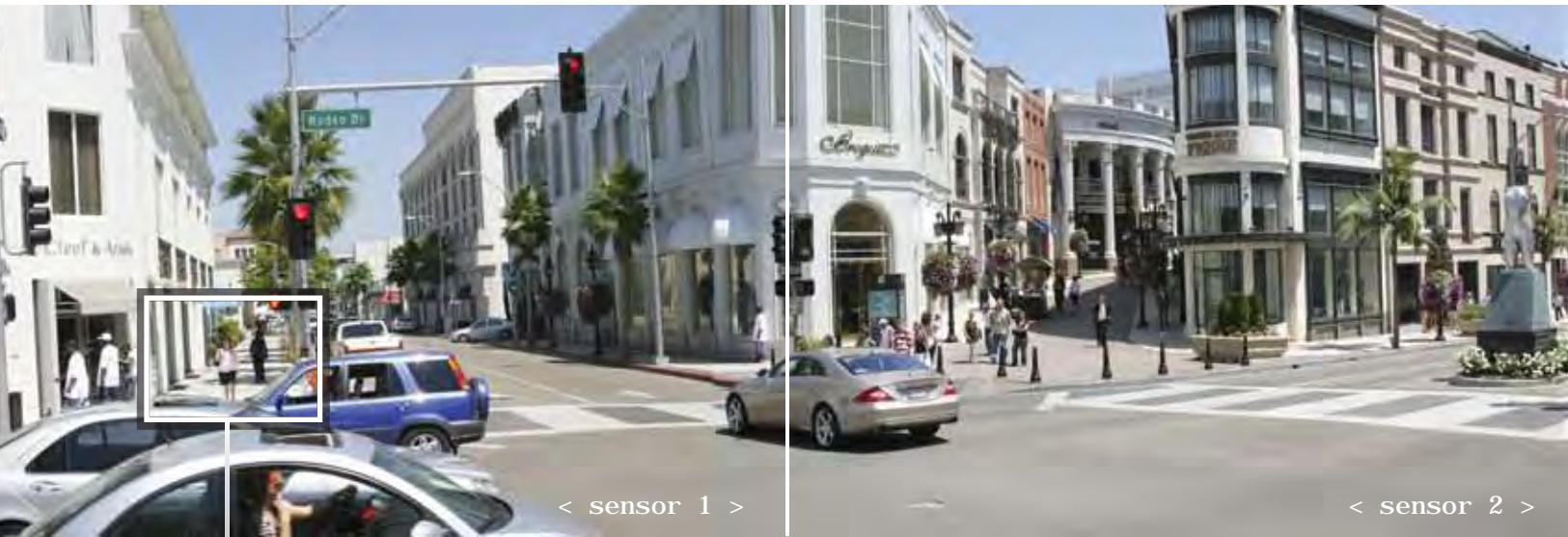
SurroundVideo® cameras  
have 24 times the resolution  
of analog cameras and offer  
dramatically lower cost per  
area under surveillance.



# AV8180



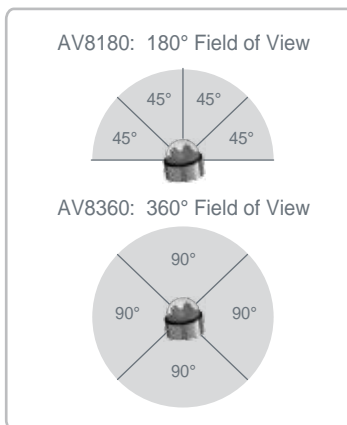
180° Field of View | High Definition | 8 Megapixel Camera



180° SurroundVideo® camera images with selectable Region of Interest (ROI) zones for optimized bandwidth



Real-time, high definition digital video surveillance with 24x the resolution of analog surveillance cameras.



Ultra-compact design incorporates four 2 megapixel sensors for full 180° or 360° coverage.

Unique SurroundVideo® 8-megapixel network cameras deliver full motion 180° or 360° panoramas. Compact 6" dome design incorporates four 2 megapixel sensors, dramatically reducing total installation cost.

### HIGH RESOLUTION & FULL MOTION

AV8180 and AV8360 network cameras leverage proprietary massively-parallel image processing technologies SurroundVideo® and MegaVideo® and deliver full motion, progressive scan panoramic video over four 1600x1200 channels at 22 fps.

### COST EFFICIENCY

High resolution and crystal clear imagery allow a single SurroundVideo® camera to replace up to 24 analog cameras, substantially reducing the total cost of installation. Compact 6" dome has a single external cable that carries both power and video using Power-over-Ethernet (POE) technology.

### NO- MOVING-PARTS INSTANTENEOUS 180° OR 360° PAN TILT ZOOM (PTZ)

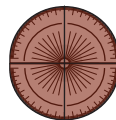
Super high resolution of AV8360 and AV8180 allows efficient no-moving-parts zoom windows to be instantly re-positioned across the entire panorama. These zoom windows are delivered as separate video streams simultaneously with the complete full field of view panoramic video, thus eliminating the trade-off between magnification and area coverage as well as avoiding costly and unreliable electro-mechanical PTZ.

### FORENSIC ZOOMING

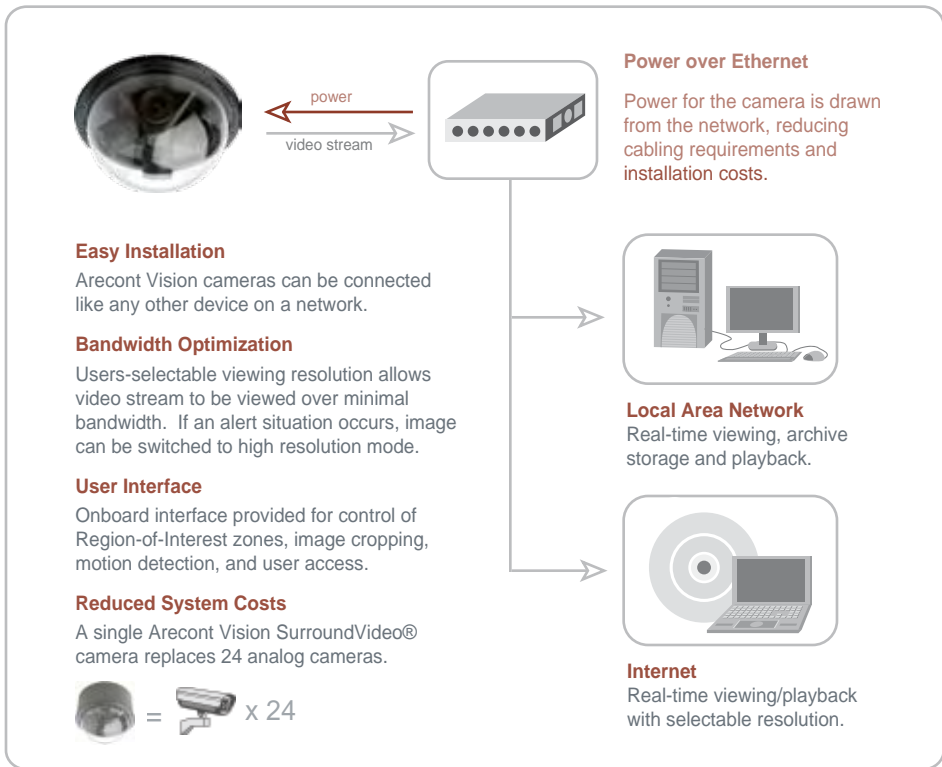
Playback of high-resolution digital archives allows "zoom-after-event" on any object in the field of view, eliminating the need for manned installations.

### EFFICIENT BANDWIDTH MANAGEMENT

Efficient bandwidth utilization is supported via user-selectable regions of interest (ROI). The reduction of overall storage and bandwidth requirements may be achieved by selecting up to 4 regions of interest with independent control of resolution and compression quality for each of the selected regions.



# AV8360

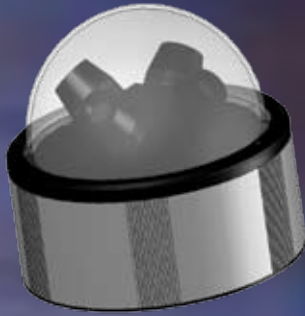


The user can simultaneously view both full field-of-view and multiple regions of interest.

User selectable Region of Interest (ROI) allows users to set the resolution of defined zones in a video stream, reducing image size and required bandwidth.



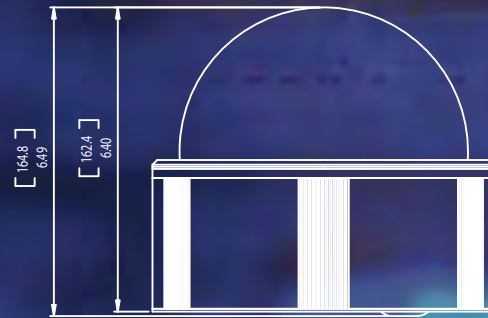
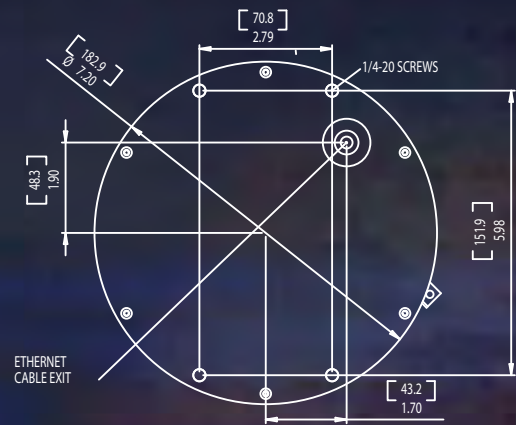
360° SurroundVideo® camera images with selectable Region of Interest (ROI) zones for optimized bandwidth



AV8360



AV8180



Arecont Vision manufactures the world's fastest HDTV network cameras in discreet, low profile 6" dome designs.

The SurroundVideo® AV8180 and AV8360 panoramic cameras deliver full motion HDTV resolution at NTSC prices.

Imaging

Four 2 megapixel CMOS image sensors  
 1600(H) x 1200(V) pixel array each sensor  
 1/2" optical format  
 Sensitivity 0.2 lux @ F2.0  
 Moonlight™ Mode - extended exposure and proprietary noise cancellation

Data Transmission

Data rate up to 55Mbps  
 Video frame rate (all four channels in parallel):  
 88 fps @ 800 x 600 or 22 fps @ 1600 x 1200  
 Motion JPEG with 21 levels of quality  
 100Base-T Ethernet network interface

Programmability  
 (independent for each channel)

Auto exposure (AE) and gain control (AGC) >120dB  
 Auto backlight compensation  
 Auto multi-matrix white balance  
 50/60Hz selectable flicker control  
 Electronic pan, tilt, zoom (PTZ)  
 Electronic image rotation - up-side down image turn  
 Programmable motion blurring control for low-light mode  
 Pictures-in-picture: simultaneous delivery of full field of view and zoomed images

Electrical

Power over Ethernet (POE) IEEE 802.3af or DC Input  
 Power consumption 6 watts maximum

Regulatory Approvals

FCC and CE compliant

Mechanical/  
 Environmental

4lb or 1.8 Kg  
 Operating Temperature 0°C to +50°C



Arecont Vision SurroundVideo® camera installed in outdoor heater/blower enclosure.



View of AV8360 camera showing four 2 megapixel camera channels.

Note: Arecont Vision reserves the right to change products or specifications without notice.

# Arecont Vision MegaVideo® AV3130M Network Camera

# AV3130M



- Sensitivity from 0.01 lux to 100,000 lux
- Frame Rate 20 fps @ Resolution 1,920 x 1,200

**Multi-sensor DayNight™ AV3130M leverages proprietary patent-pending technology and alleviates the cost and sensitivity shortcomings associated with multi-megapixel video surveillance.**

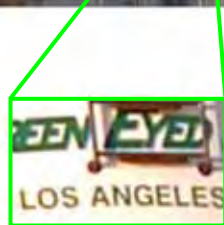
- **SUPERB HIGH RESOLUTION & FULL MOTION:** AV3130M network camera delivers full motion progressive scan 1920 x 1200 video at 20 fps featuring massively-parallel MegaVideo® image processing architecture capable of sustaining over 6 billion operations per second.

- **SUPERB ILLUMINATION RANGE & SENSITIVITY:** While sophisticated conventional cameras improve low-light sensitivity by mechanically removing the IR filter, the AV3130M uses DualBand™ technology that seamlessly switches to optimized monochrome sensor in low light, avoiding sensitivity drop-off due to color filters and small pixels and accommodating 10,000,000:1 range of scene illuminations, from bright sunlight to cloudy moonlight.

- **SUPERB SYSTEM RELIABILITY & FUNCTIONALITY:** AV3130M has no moving mechanical parts and is complemented by state-of-the-art surveillance software capable of live image acquisition and display from multiple cameras, policy-based digital archiving and video redistribution across local and wide area networks.

- **SUPERB COST EFFICIENCY:** High resolution and crystal clear imagery allows the AV3130M to substitute up to ten analog cameras; thereby reducing the total cost of installation. No need to supply a separate power source since the power can be drawn from a low cost Power-over-Ethernet switch.

- **EXCELLENT MOTION DETECTION:** Onboard real-time motion detection with size and sensitivity controls for up to 64 separate motion detection zones.



Day or Night  
MegaVideo® Technology  
Delivers Full Motion  
HDTV Resolution  
at NTSC Price



Arecont Vision

2400 Lincoln Avenue, Altadena, CA 91001, USA  
Toll Free (877) CAMERA-8 (626) 296-6453

# AV3130M CAMERA SPECIFICATION

# Arecont Vision MegaVideo® AV3130M Network Camera

## Imaging

- 1/2" CMOS Image Sensors:
  - 3 Mpixel Color 2048(H) x 1536(V)
  - 1.3 Mpixel Monochrome 1280(H) x 1024(V)
- Bayer mosaic RGB filter
- Sensitivity 0.01 lux @ F1.4
- Dynamic Range 60 dB
- Maximum SNR 45 dB

## Data Transmission

- Data Rate up to 55Mbps
- Video Frame Rate up to:
  - 20 fps @ 1920x1200
  - 30 fps @ 1280x1024
- Motion JPEG with 20 levels of quality
- TFTP & HTTP Image Transmission Protocols
- 100Base-T Ethernet Network Interface

## Programmability

- Auto Day-Night switch from Monochrome to Color
- Auto Exposure (AE) and Gain Control (AGC) >120dB
- On Camera Motion Detection with 64 detection zones
- Auto Backlight Compensation
- Auto Multi-Matrix White Balance
- 50/60Hz selectable Flicker Control
- Electronic Pan, Tilt, Zoom (PTZ)
- Electronic Image Rotation - up-side down image turn
- Resolution windowing down to 32x32 pixels window
- Programmable Motion Blurring Control for Low-Light Mode
- Programmable Resolution, Brightness, Saturation, Gamma, Sharpness, Tint
- Pictures-In-Picture: Simultaneous delivery of full field of view and zoomed images



## Electrical

- Opto-coupled alarm input, Opto-coupled alarm output
- Power over Ethernet (PoE) or DC Input
- PoE 802.3af / auxiliary 12V - 48V DC
- Power Consumption 3.5 Watts maximum

## Regulatory Approvals

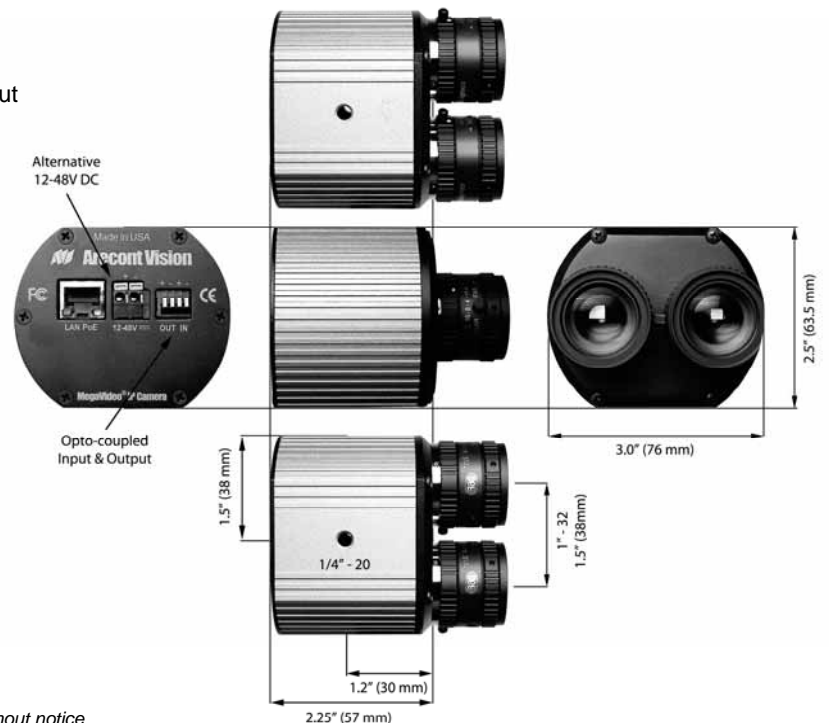
- FCC Part 15, Class B
- CE compliant

## Mechanical

- 3"W x 2.5"H x 2.25"D (w/o lens)
- 8.6 oz or 243 grams (w/o lens)
- Dual C/CS Lens Mount

## Environmental

- Operating Temperature 0°C to +50°C
- Storage Temperature -20°C to +60°C
- Humidity 0% to 90% (non condensing)



Arecont Vision reserves the right to change products or specifications without notice

# Arecont Vision MegaVideo® AV2100M Network Camera

# AV2100M

- 2 Mpixel IP-camera sensitive to 0.1 lux @ F 1.4
- Frame Rate 24 fps @ Resolution 1,600 x 1,200

The AV-2100M offers cinema compatible high frame rates to allow real time high definition digital video surveillance with 6 times the resolution of the best analog surveillance cameras



- **GREAT HIGH RESOLUTION & FULL MOTION:** AV2100M network camera delivers full motion progressive scan 1600 x 1200 video at 24 fps featuring massively-parallel MegaVideo® image processing architecture capable of sustaining over 6 billion operations per second.

- **GREAT COST EFFICIENCY:** High resolution and crystal clear imagery allows the AV2100M to substitute up to six analog cameras; thereby reducing the total cost of installation. No need to supply a separate power source since the power can be drawn from a low cost Power-over-Ethernet switch.

- **GREAT FORENSIC ZOOMING:** AV2100M surveillance system has the ability to zoom after the event from high resolutions digital archives and the simultaneous viewing of zoomed and full field of view images.

- **EXCELLENT MOTION DETECTION:** Onboard real-time motion detection with size and sensitivity controls for up to 64 separate motion detection zones.



1600 x 1200

1-800-Go-FedEx  
fedex.com



1600 x 1200

Day or Night  
MegaVideo® Technology  
Delivers Full Motion  
HDTV Resolution  
at NTSC Price



Arecont Vision

2400 Lincoln Avenue, Altadena, CA 91001, USA  
Toll Free (877) CAMERA-8 (626) 296-6453

## Imaging

- 2 Megapixel CMOS Image Sensor
- 1600(H) x 1200(V) pixel array
- 1/2" optical format
- 4.2 µm pixel pitch
- Bayer mosaic RGB filter
- Sensitivity 0.1 lux @ F1.4
- Dynamic Range 60 dB
- Maximum SNR 41 dB

## Data Transmission

- Data Rate up to 55Mbps
- Video Frame Rate up to 15 fps @ 2560x1600
- Motion JPEG with 20 levels of quality
- TFTP and HTTP Image Transmission Protocols
- 100Base-T Ethernet Network Interface

## Programmability

- Auto Exposure (AE) and Gain Control (AGC) >120dB
- On Camera Motion Detection with 64 detection zones
- Auto Backlight Compensation
- Auto Multi-Matrix White Balance
- 50/60Hz selectable Flicker Control
- Electronic Pan, Tilt, Zoom (PTZ)
- Electronic Image Rotation - up-side down image turn
- Resolution windowing down to 32x32 pixels window
- Programmable Motion Blurring Control for Low-Light Mode
- MoonLight™ Mode – extended exposure and proprietary noise cancellation
- Programmable Resolution, Brightness, Saturation, Gamma, Sharpness, Tint
- Pictures-In-Picture: Simultaneous delivery of full field of view and zoomed images



## Electrical

- Opto-coupled alarm input, Opto-coupled alarm and flash sync output
- Power over Ethernet (PoE) or DC Input
- PoE 802.3af / auxiliary 12V - 48V DC
- Power Consumption 3 Watts maximum

## Regulatory Approvals

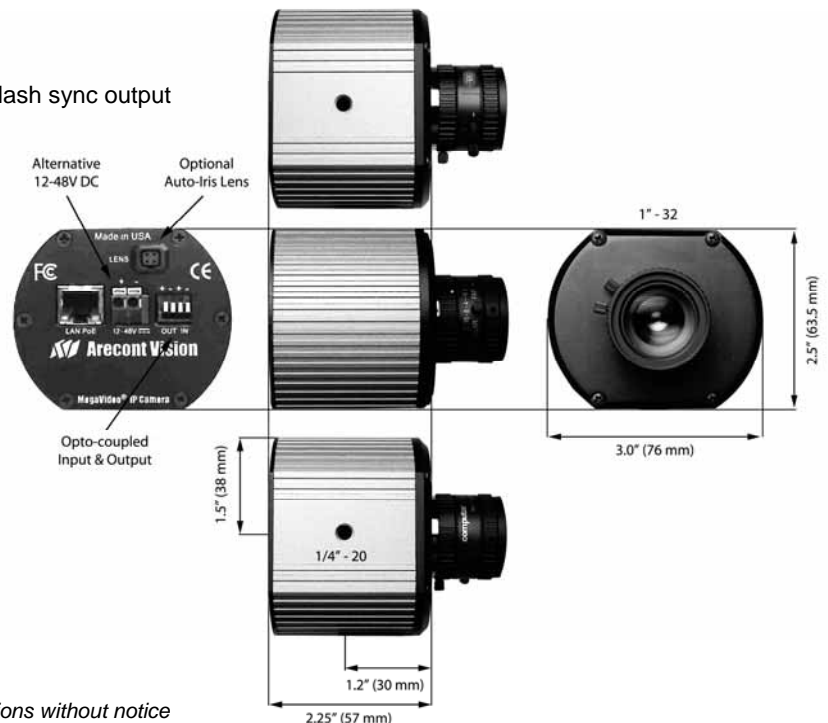
- FCC Part 15, Class B
- CE compliant

## Mechanical

- 3"W x 2.5"H x 2.25"D (w/o lens)
- 8.6 oz or 243 grams (w/o lens)
- C/CS Lens Mount

## Environmental

- Operating Temperature 0°C to +50°C
- Storage Temperature -20°C to +60°C
- Humidity 0% to 90% (non condensing)



Arecont Vision reserves the right to change products or specifications without notice

# Arecont Vision MegaVideo<sup>®</sup> AV3100M Network Camera

# AV3100M

- 3 Mpixel IP-camera sensitive to 0.2 lux @ F 1.4
- Frame Rate 22 fps @ Resolution 1,920 x 1,080

The AV-3100M offers cinema compatible frame rates to allow real time high definition digital video surveillance with 10 times the resolution of the best analog surveillance cameras.

- **SUPERB HIGH RESOLUTION & FULL MOTION:** AV3100M network camera delivers full motion progressive scan 1920 x 1080 video at 22 fps featuring massively-parallel MegaVideo<sup>®</sup> image processing architecture capable of sustaining over 6 billion operations per second.

- **SUPERB COST EFFICIENCY:** High resolution and crystal clear imagery allows the AV3100M to substitute up to ten analog cameras; thereby reducing the total cost of installation. No need to supply a separate power source since the power can be drawn from a low cost Power-over-Ethernet switch.

- **SUPERB FORENSIC ZOOMING:** AV3100M surveillance system has the ability to zoom after the event from high resolutions digital archives and the simultaneous viewing of zoomed and full field of view images.

- **EXCELLENT MOTION DETECTION:** Onboard real-time motion detection with size and sensitivity controls for up to 64 separate motion detection zones.



Day or Night  
MegaVideo<sup>®</sup> Technology  
Delivers Full Motion  
HDTV Resolution  
at NTSC Price

Images are taken  
with COMPUTAR  
MEGAPIXEL LENS  
25mm focal length



Arecont Vision

2400 Lincoln Avenue, Altadena, CA 91001, USA  
Toll Free (877) CAMERA-8 (626) 296-6453

# AV3100M CAMERA SPECIFICATION

# Arecont Vision MegaVideo® AV3100M Network Camera

## Imaging

- 3 Megapixel CMOS Image Sensor
- 2048(H) x 1536(V) pixel array
- 1/2" optical format
- 3.2 µm pixel pitch
- Bayer mosaic RGB filter
- Sensitivity 0.2 lux @ F1.4
- Dynamic Range 60 dB
- Maximum SNR 41 dB

## Data Transmission

- Data Rate up to 55Mbps
- Video Frame Rate up to 22 fps @ 1920x1200
- Motion JPEG with 20 levels of quality
- TFTP and HTTP Image Transmission Protocols
- 100Base-T Ethernet Network Interface

## Programmability

- Auto Exposure (AE) and Gain Control (AGC) >120dB
- Auto Backlight Compensation
- On Camera Motion Detection with 64 detection zones
- Auto Multi-Matrix White Balance
- 50/60Hz selectable Flicker Control
- Electronic Pan, Tilt, Zoom (PTZ)
- Electronic Image Rotation - up-side down image turn
- Resolution windowing down to 32x32 pixels window
- Programmable Motion Blurring Control for Low-Light Mode
- MoonLight™ Mode – extended exposure and proprietary noise cancellation
- Programmable Resolution, Brightness, Saturation, Gamma, Sharpness, Tint
- Pictures-In-Picture: Simultaneous delivery of full field of view and zoomed images



## Electrical

- Opto-coupled alarm input, Opto-coupled alarm and flash sync output
- Power over Ethernet (PoE) or DC Input
- PoE 802.3af / auxiliary 12V - 48V DC
- Power Consumption 3 Watts maximum

## Regulatory Approvals

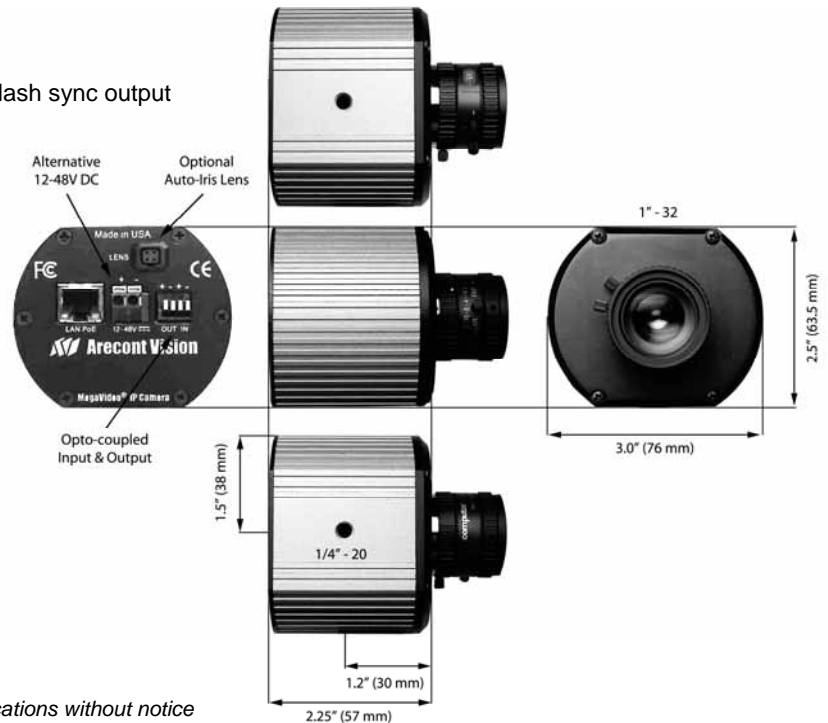
- FCC Part 15, Class B
- CE compliant

## Mechanical

- 3"W x 2.5"H x 2.25"D (w/o lens)
- 8.6 oz or 243 grams (w/o lens)
- C/CS Lens Mount

## Environmental

- Operating Temperature 0°C to +50°C
- Storage Temperature -20°C to +60°C
- Humidity 0% to 90% (non condensing)



Arecont Vision reserves the right to change products or specifications without notice

# Arecont Vision MegaVideo® AV5100M Network Camera

# AV5100M

- 5 Mpixel IP-camera sensitive to 0.3 lux @ F 1.4
- Frame Rate 12 fps @ Resolution 2,560 x 1,600

The AV5100M offers cinema compatible frame rates to allow real time high definition digital video surveillance with 15 times the resolution of the best analog surveillance cameras

- **ULTRA HIGH RESOLUTION & FULL MOTION:** AV5100M network camera delivers full motion progressive scan 2560 x 1600 video at 12 fps featuring massively-parallel MegaVideo® image processing architecture capable of sustaining over 6 billion operations per second

- **ULTRA COST EFFICIENCY:** High resolution and crystal clear imagery allows the AV5100M to substitute up to fifteen analog cameras; thereby reducing the total cost of installation. No need to supply a separate power source since the power can be drawn from a low cost Power-over-Ethernet switch.

- **ULTRA FORENSIC ZOOMING:** AV5100M surveillance system has the ability to zoom after the event from high resolutions digital archives and the simultaneous viewing of zoomed and full field of view images

- **EXCELLENT MOTION DETECTION:** Onboard real-time motion detection with size and sensitivity controls for up to 64 separate motion detection zones.



Images are taken  
with **COMPUTAR  
MEGAPIXEL LENS**  
25mm focal length

Day or Night  
MegaVideo® Technology  
Delivers Full Motion  
HDTV Resolution  
at NTSC Price



Arecont Vision

2400 Lincoln Avenue, Altadena, CA 91001, USA  
Toll Free (877) CAMERA-8 (626) 296-6453

## AV5100M CAMERA SPECIFICATION

# Arecont Vision MegaVideo® AV5100M Network Camera

### Imaging

- 5 Megapixel CMOS Image Sensor
- 2592(H) x 1944(V) pixel array
- ½" optical format
- 2.2 µm pixel pitch
- Bayer mosaic RGB filter
- Sensitivity 0.3 lux @ F1.4
- Dynamic Range 60 dB
- Maximum SNR 41 dB

### Data Transmission

- Data Rate up to 55Mbps
- Video Frame Rate up to 12 fps @ 2560x1600
- Motion JPEG with 20 levels of quality
- TFTP and HTTP Image Transmission Protocols
- 100Base-T Ethernet Network Interface

### Programmability

- Auto Exposure (AE) and Gain Control (AGC) >120dB
- Auto Backlight Compensation
- On Camera Motion Detection with 64 detection zones
- Auto Multi-Matrix White Balance
- 50/60Hz selectable Flicker Control
- Electronic Pan, Tilt, Zoom (PTZ)
- Electronic Image Rotation - up-side down image turn
- Resolution windowing down to 32x32 pixels window
- Programmable Motion Blurring Control for Low-Light Mode
- MoonLight™ Mode – extended exposure and proprietary noise cancellation
- Programmable Resolution, Brightness, Saturation, Gamma, Sharpness, Tint
- Pictures-In-Picture: Simultaneous delivery of full field of view and zoomed images

### Electrical

- Opto-coupled alarm input, Opto-coupled alarm and flash sync output
- Power over Ethernet (PoE) or DC Input
- PoE 802.3af / auxiliary 12V - 48V DC
- Power Consumption 3 Watts maximum

### Regulatory Approvals

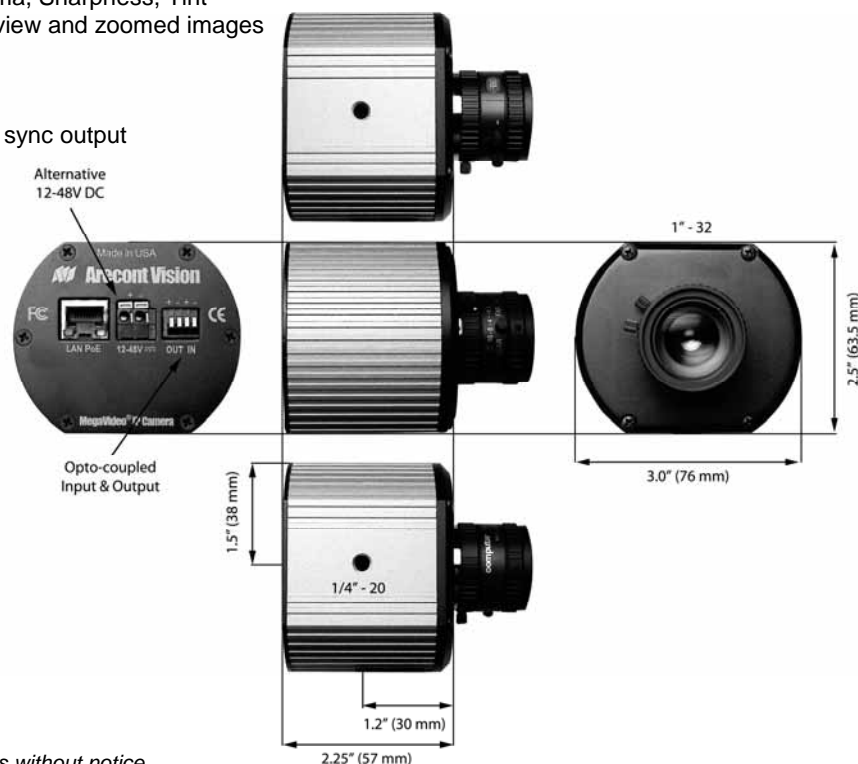
- FCC Part 15, Class B
- CE compliant

### Mechanical

- 3"W x 2.5"H x 2.25"D (w/o lens)
- 8.6 oz or 243 grams (w/o lens)
- C/CS Lens Mount

### Environmental

- Operating Temperature 0°C to +50°C
- Storage Temperature -20°C to +60°C
- Humidity 0% to 90% (non condensing)



Arecont Vision reserves the right to change products or specifications without notice

# Arecont Vision SurroundVideo® AV8180 Network Camera

# AV8180

- 8 Mpixel 180° IP-camera sensitive to 0.2 lux @ F 2.0
- Panoramic Camera with Four 2 Megapixel Imager Sensors



The AV8180 camera is based on SurroundVideo® technology and offers panoramic views and cinema compatible high frame rates to allow real time high definition digital video surveillance with 24 times the resolution of the best analog surveillance cameras

- **GREAT HIGH RESOLUTION & FULL MOTION:** AV8180 network camera delivers full motion progressive scan 1600 x 1200 video at 22 fps per channel featuring massively-parallel MegaVideo® image processing architecture capable of sustaining over 6 billion operations per second.

- **GREAT COST EFFICIENCY:** High resolution and crystal clear imagery allows the AV8180 to substitute up to 24 analog cameras; thereby reducing the total cost of installation. No need to supply a separate power source since the power can be drawn from a low cost Power-over-Ethernet switch.

- **GREAT FORENSIC ZOOMING:** AV8180 surveillance system has the ability to zoom after the event from high resolutions digital archives and the simultaneous viewing of zoomed and full field of view images.

- **EXCELLENT MOTION DETECTION:** Onboard real-time motion detection with size and sensitivity controls for up to 64 separate motion detection zones per channel.



Day or Night MegaVideo® Technology Delivers Full Motion HDTV Resolution at NTSC Price



Arecont Vision

2400 Lincoln Avenue, Altadena, CA 91001, USA  
Toll Free (877) CAMERA-8 (626) 296-6453

# Arecont Vision SurroundVideo® AV8180 Network Camera

## AV8180 CAMERA SPECIFICATION

### Imaging

- Four 2 Megapixel CMOS Image Sensors
- 1600(H) x 1200(V) pixel array each sensor
- ½" optical format
- 4.2 µm pixel pitch
- Bayer mosaic RGB filter
- Sensitivity 0.2 lux @ F2.0
- Dynamic Range 60 dB
- Maximum SNR 45 dB

### Data Transmission

- Data Rate up to 55Mbps
- Video Frame Rate (all four channels in parallel):
  - 88 fps @ 800 x 600
  - 22 fps @ 1600 x 1200
- Motion JPEG with 20 levels of quality
- TFTP & HTTP Image Transmission Protocols
- 100Base-T Ethernet Network Interface

### Programmability (independent for each channel)

- Auto Exposure (AE) and Gain Control (AGC) >120dB
- Auto Backlight Compensation
- Auto Multi-Matrix White Balance
- 50/60Hz selectable Flicker Control
- Electronic Pan, Tilt, Zoom (PTZ)
- Electronic Image Rotation - up-side down image turn
- Resolution windowing down to 32x32 pixels window
- Programmable Motion Blurring Control for Low-Light Mode
- Programmable Resolution, Brightness, Saturation, Gamma, Sharpness, Tint
- Pictures-In-Picture: Simultaneous delivery of full field of view and zoomed images
- On-camera Motion Detection with 64 detection zones per channel

### Electrical

- Power over Ethernet (PoE) or DC Input
- Compatible with IEEE 802.3af PoE equipment
- 9V – 12VDC (2.1mm x 5.5mm, center positive)
- Power Consumption 8 Watts maximum

### Regulatory Approvals

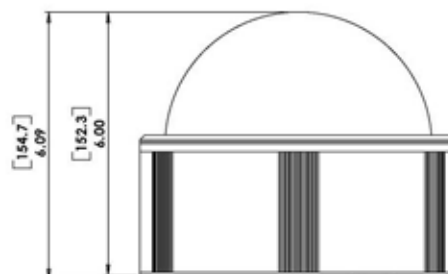
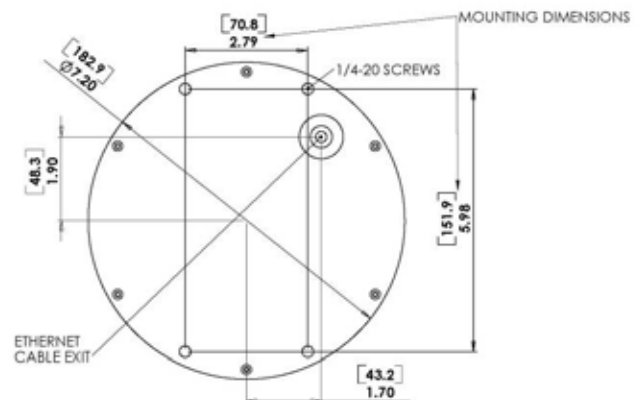
- FCC Part 15, Class A
- CE compliant

### Mechanical

- 4lb or 1800 grams
- M12 x 0.5 Lens Mount

### Environmental

- Operating Temperature 0°C to +50°C
- Storage Temperature -20°C to +60°C
- Humidity 0% to 90% (non condensing)



Arecont Vision reserves the right to change products or specifications without notice

# Arecont Vision SurroundVideo® AV8360 Network Camera

# AV8360

- 8 Mpixel 360° IP-camera sensitive to 0.2 lux @ F2.0
- Panoramic Camera with Four 2 Megapixel Image Sensors



The AV8360 camera offers panoramic views and cinema compatible high frame rates to allow real time high definition digital video surveillance with 24 times the resolution of the best analog surveillance cameras

- **GREAT HIGH RESOLUTION & FULL MOTION:** AV8360 network camera delivers full motion progressive scan 1600 x 1200 video at 22 fps featuring massively-parallel MegaVideo® image processing architecture capable of sustaining over 6 billion operations per second.
- **GREAT COST EFFICIENCY:** High resolution and crystal clear imagery allows the AV8360 to substitute up to 24 analog cameras; thereby reducing the total cost of installation. No need to supply a separate power source since the power can be drawn from a low cost Power-over-Ethernet switch.
- **GREAT FORENSIC ZOOMING:** AV8360 surveillance system has the ability to zoom after the event from high resolutions digital archives and the simultaneous viewing of zoomed and full field of view images.



Day or Night MegaVideo® Technology Delivers Full Motion HDTV Resolution at NTSC Price



Arecont Vision

2400 Lincoln Avenue, Altadena, CA 91001, USA  
Toll Free (877) CAMERA-8 (626) 296-6453

# Arecont Vision SurroundVideo® AV8360 Network Camera

## AV8360 CAMERA SPECIFICATION

### Imaging

- Four 2 Megapixel CMOS Image Sensors
- 1600(H) x 1200(V) pixel array each sensor
- ½" optical format
- 4.2 µm pixel pitch
- Bayer mosaic RGB filter
- Sensitivity 0.2 lux @ F2.0
- Dynamic Range 60 dB
- Maximum SNR 45 dB

### Data Transmission

- Data Rate up to 55Mbps
- Video Frame Rate (all four channels in parallel):
  - 88 fps @ 800 x 600
  - 22 fps @ 1600 x 1200
- Motion JPEG with 20 levels of quality
- TFTP & HTTP Image Transmission Protocols
- 100Base-T Ethernet Network Interface

### Programmability (independent for each channel)

- Auto Exposure (AE) and Gain Control (AGC) >120dB
- Auto Backlight Compensation
- Auto Multi-Matrix White Balance
- 50/60Hz selectable Flicker Control
- Electronic Pan, Tilt, Zoom (PTZ)
- Electronic Image Rotation - up-side down image turn
- Resolution windowing down to 32x32 pixels window
- Programmable Motion Blurring Control for Low-Light Mode
- Programmable Resolution, Brightness, Saturation, Gamma, Sharpness, Tint
- Pictures-In-Picture: Simultaneous delivery of full field of view and zoomed images
- On-camera Motion Detection with 64 detection zones per channel

### Electrical

- Power over Ethernet (POE) or DC Input
- Compatible with IEEE 802.3af POE equipment
- 9V – 12VDC (2.1mm x 5.5mm, center positive)
- Power Consumption 6 Watts maximum

### Regulatory Approvals

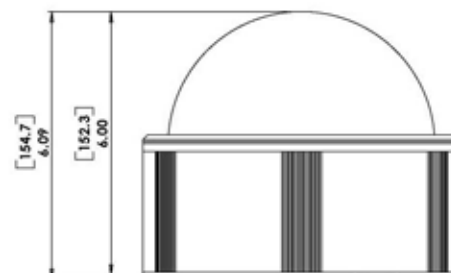
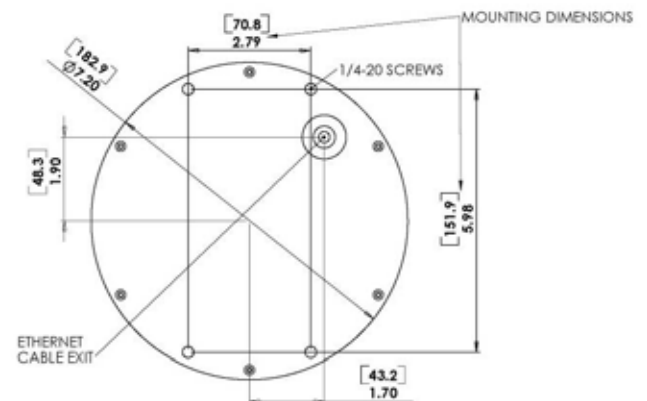
- FCC Part 15, Class B
- CE compliant

### Mechanical

- 4lb or 1800 grams
- C/CS Lens Mount

### Environmental

- Operating Temperature 0°C to +50°C
- Storage Temperature -20°C to +60°C
- Humidity 0% to 90% (non condensing)



Arecont Vision reserves the right to change products or specifications without notice

# Arecont Vision MegaVideo<sup>®</sup> AV1300M Network Camera

# AV1300M



- 1.3 Mpixel IP-camera sensitive to 0.1 lux @ F 1.4
- Frame Rate 30 fps @ Resolution 1,280 x 1,024

The AV-1300M offers same frame rate as NTSC and real time high definition digital video surveillance with 4 times the resolution of the best analog surveillance cameras

- **HIGH RESOLUTION & FULL MOTION:** AV1300M network camera delivers full motion progressive scan 1280 x 1024 video at 30 fps featuring massively-parallel MegaVideo<sup>®</sup> image processing architecture capable of sustaining over 6 billion operations per second.

- **COST EFFICIENCY:** High resolution and crystal clear imagery allows the AV1300M to substitute up to three analog cameras; thereby reducing the total cost of installation. No need to supply a separate power source since the power can be drawn from a low cost Power-over-Ethernet switch.

- **FORENSIC ZOOMING:** AV1300M surveillance system has the ability to zoom after the event from high resolutions digital archives and the simultaneous viewing of zoomed and full field of view images.

- **EXCELLENT MOTION DETECTION:** Onboard real-time motion detection with size and sensitivity controls for up to 64 separate motion detection zones.



Full Motion  
30 Frames per Second

Day or Night  
MegaVideo<sup>®</sup> Technology  
Delivers Full Motion  
HDTV Resolution  
at NTSC Price



Arecont Vision

2400 Lincoln Avenue, Altadena, CA 91001, USA  
Toll Free (877) CAMERA-8 (626) 296-6453

## Imaging

- 1.3 Megapixel CMOS Image Sensor
- 1280(H) x 1024(V) pixel array
- 1/2" optical format
- 4.2 µm pixel pitch
- Bayer mosaic RGB filter
- Sensitivity 0.1 lux @ F1.4
- Dynamic Range 60 dB
- Maximum SNR 45 dB

## Data Transmission

- Data Rate up to 55Mbps
- Video Frame Rate up to 30 fps @ 1280 x1024
- Motion JPEG with 20 levels of quality
- TFTP and HTTP Image Transmission Protocols
- 100Base-T Ethernet Network Interface

## Programmability

- Auto Exposure (AE) and Gain Control (AGC) >120dB
- Auto Backlight Compensation
- On Camera Motion Detection with 64 detection zones
- Auto Multi-Matrix White Balance
- 50/60Hz selectable Flicker Control
- Electronic Pan, Tilt, Zoom (PTZ)
- Electronic Image Rotation - up-side down image turn
- Resolution windowing down to 32x32 pixels window
- Programmable Motion Blurring Control for Low-Light Mode
- MoonLight™ Mode – extended exposure and proprietary noise cancellation
- Programmable Resolution, Brightness, Saturation, Gamma, Sharpness, Tint
- Pictures-In-Picture: Simultaneous delivery of full field of view and zoomed images

## Electrical

- Opto-coupled alarm input, Opto-coupled alarm and flash sync output
- Power over Ethernet (PoE) or DC Input
- PoE 802.3af / auxiliary 12V - 48V DC
- Power Consumption 3 Watts maximum

## Regulatory Approvals

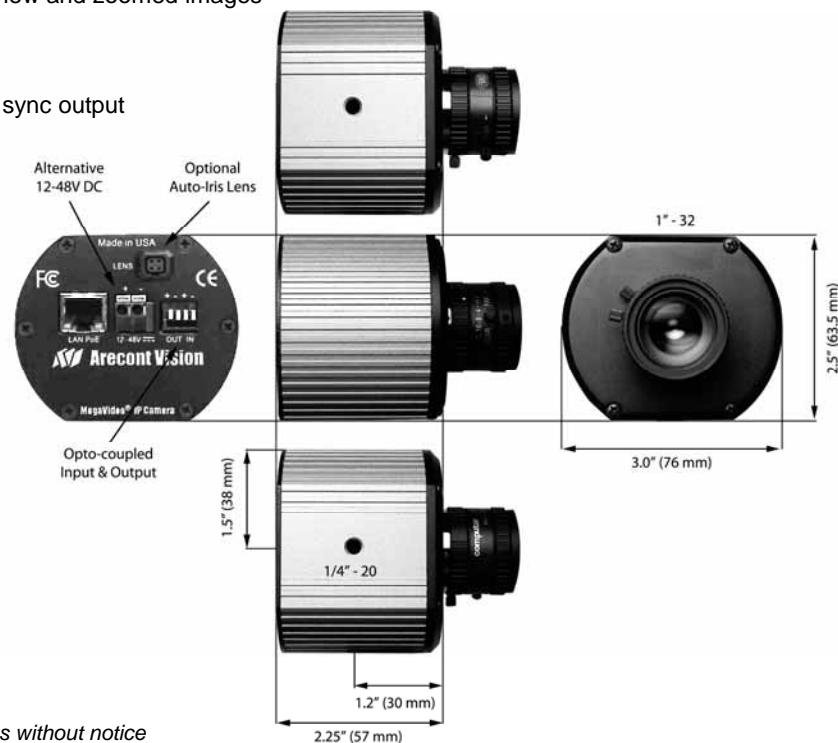
- FCC Part 15, Class B
- CE compliant

## Mechanical

- 3"W x 2.5"H x 2.25"D (w/o lens)
- 8.6 oz or 243 grams (w/o lens)
- C/CS Lens Mount

## Environmental

- Operating Temperature 0°C to +50°C
- Storage Temperature -20°C to +60°C
- Humidity 0% to 90% (non condensing)



Arecont Vision reserves the right to change products or specifications without notice

# Arecont Vision HDTV Surveillance Software

# AV100

- View up to 16 HDTV cameras @ up to 30 fps
- Recording over 240 fps @ 1,920 x 1,200

The world's fastest IP-video systems from Arecont Vision are based on proprietary massively-parallel MegaVideo® technology and take advantage of unique functionality unavailable with analog cameras.

Complementing its line of megapixel cameras Arecont Vision offers flexible video surveillance system software AV100 that supports full motion real-time HDTV multi camera viewing and policy-based HDTV digital archiving, remote access, as well as automatic identification and configuration of all installed cameras.

In addition to standard functions like remote multi-user browser-based access to live and archived footage, AV100 surveillance software also supports post-event zooming from digital archives, simultaneous viewing of full field of view and multiple zoomed images from the same camera using multi-streaming feature of AV cameras, as well as instantaneous multi-user electronic pan, tilt and zoom.



**Camera Installer**

**Live Video**

**Remote Access**

**Video Archive**



Arecont Vision

2400 North Lincoln Avenue, Altadena, CA 91001, USA  
Toll Free (877) CAMERA-8 (626) 296-6453

## Video Display

- Multi Camera Views Up to 16 cameras at full motion frame rates
- Resolution View video in full, half and quarter resolution modes
- Maximum Resolution Up to 2592 x 1944 full screen single camera display
- Frame Rate Up to 30 fps @ 1280 x1024 (Depending on CPU speed)
- Multi Streaming Simultaneously stream and view multiple cameras in reduced resolution mode while also viewing full resolution zoomed windows from the same cameras (up to 4 zoomed windows from each camera transmitted as separate video streams)

## Video Archiving

- Policy-Based Recording Specify archival frequency for each camera or limit recording to images containing motion
- Recording Frame Rate Over 240 fps @ 1920x1200 resolution
- Motion Detection Specify multiple detection windows, motion sensitivity and minimum moving object size for each camera
- AVI Video Maker Create AVI video clips from archived footage
- Multi-Disk Recording Specify disk and directory for archiving of each camera
- Playback Interactive zoom during playback, playback in full or reduced resolution; synchronized playback of multiple cameras at the same time, playback all frames or only frames that contain motion, forward, fast forward and backward playback, find recorded events by date, time or motion, single frame stepping, export individual jpeg images.

## Remote Access

- Browser-based access Access video remotely via IE browser
- Remote Viewing View live video from one or multiple cameras in full or reduced resolution
- Remote Zoom Multiple authorized users can request zoomed video and independently perform PTZ for each camera
- Multi-System Access Access multiple video clusters from the same web page

## Miscellaneous

- Security Three levels of password-protected access: full control, viewing of live and archived footage or live monitoring only
- Remote Viewing Password protected remote access with access via user-selectable port
- Installation Automatic installation of all connected cameras. AV cameras are automatically identified and configured to use IP addresses available in local network
- Language Support Multi - Language Support
- Software Development Kit SDK for Linux and Windows platforms allowing easy integration of high resolution video into third party systems.

